



Version: 1.0.0

# **Wireless Intelligent Controller PC Application**

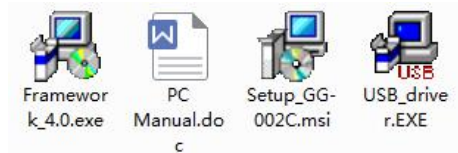
**GG-002WIFI/3G**

## **User Manual**

## 1. How to install program

### 1.1 How to start the driver

Put program disk into driver, start the driver, copy the application program file to PC hardware for convenience of application. See as following:



### 1.2 How to Install USB driver program

Open “USB\_driver.EXE”, hit“INSTALL”, wait for the finish of the installation.

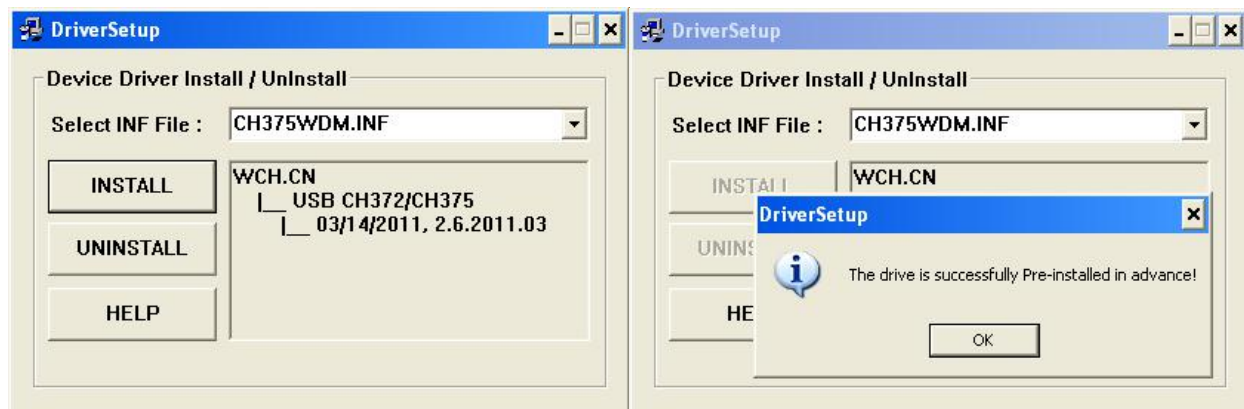


Fig 1.2.1

Fig 1.2.2

### 1.3 Installation and Running requirement

Open “Framework\_4.0.exe”, as fig 1.3.1, hit“Install”, wait until installation is been finished, which will take about 20 minutes. **Note: Must restart computer to use Framework 4.0.**

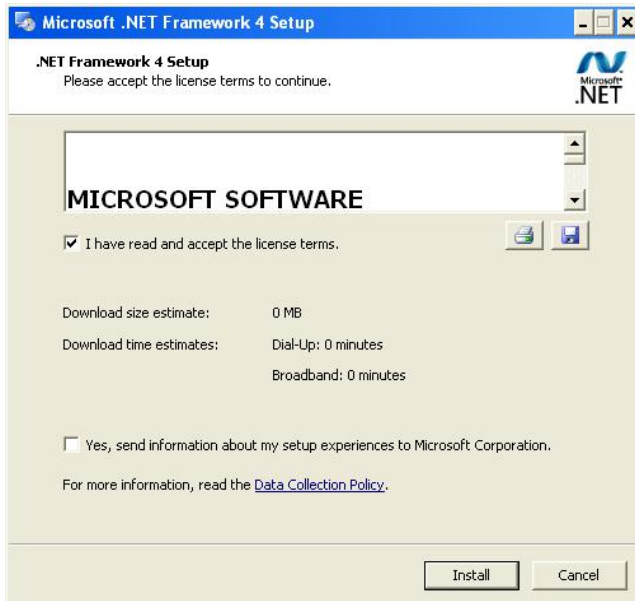


Fig 1.3.1

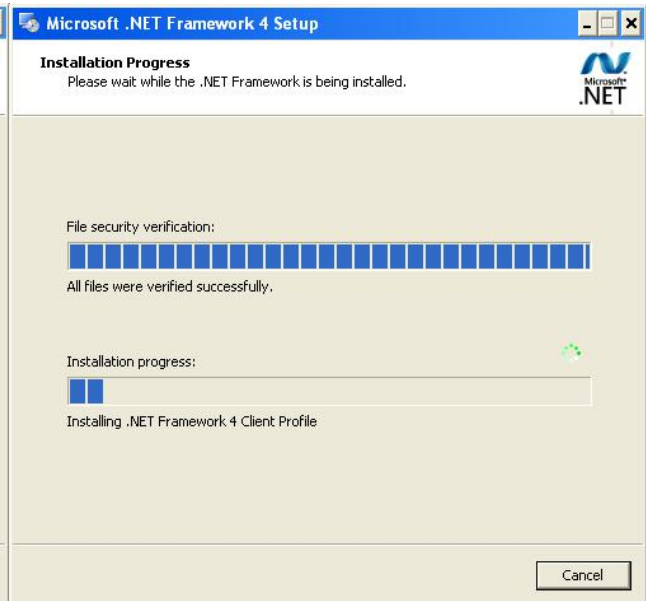


Fig 1.3.2

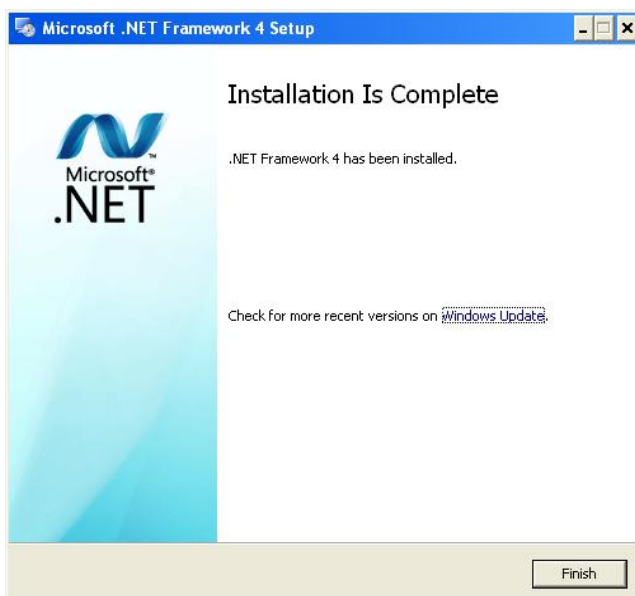


Fig 1.3.3

## 1.4 Install main program

Open “Setup\_GG-002C.msi”, follow instruction step by step as shown at following:



Fig 1.4.1

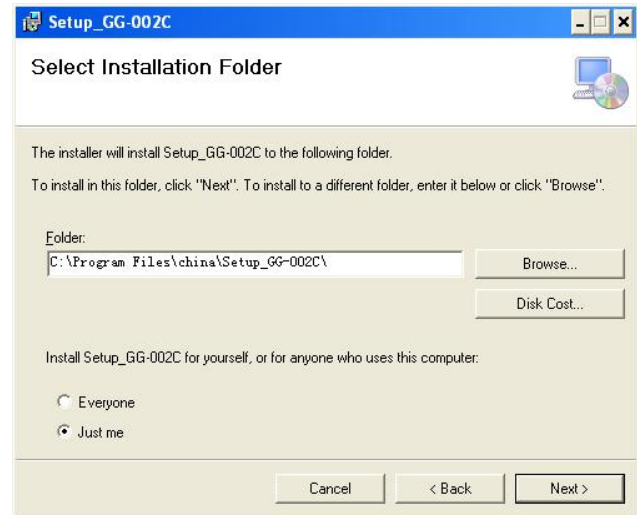


Fig 1.4.2

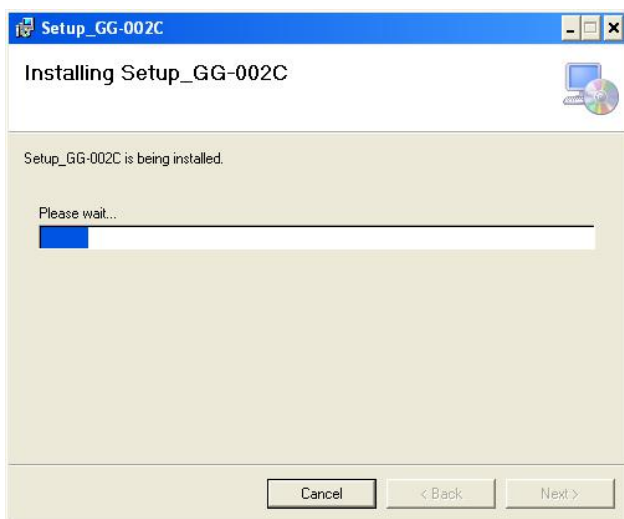


Fig 1.4.3



After installation finished, this icon will show on the desk of your computer.

## 2. Required operating system

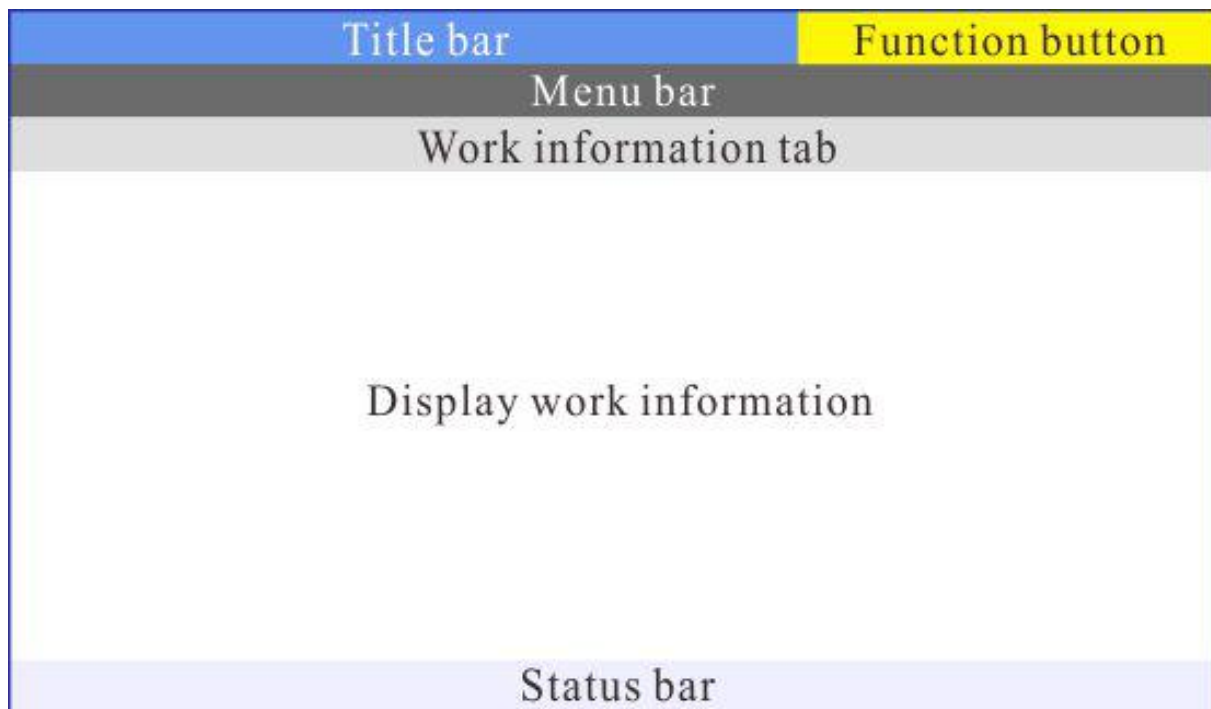
This software run at PC or compatible with Window operating system. Needs to install USB drive and Microsoft .Net Framework 4.0. At least above 512M internal storage, Hardware of at least 10G.

## 3. Running environment

The software running on the PC and its compatible computer, using the WINDOWS operating system, you need to

install the USB driver and Microsoft.net Framework 4.0. Pentium II more CPU, 512 MB or more memory, more than 10 G hard disk.

## 4. Structure



## 5. How to use this software



1. As illustrated above, Using USB cable connect PC and main controller, keep PC power on.
2. Open this application icon on PC and the main controller, the software will start to initialize (That is getting working information of main controller, and new history record).
3. Irrigation control and Supervising. (Function as same as from operate from main controller, please refer to main controller user manual)

## 6. Notes and How to operate

1) Open “Basic setup” and “Network”, PC will get and refresh current setup from the main controller first. Following is the interface of “Network”. (Remark: There is no network settings on main controller, only can setup network from PC when connecting main controller to PC)



2) Browse into “Zone Setup”, will refresh irrigation time tables established at basic setup from the main controller first. Switch zone # to refresh and display current setup information for this zone.

3) “Registered Equipment” frame, only show but can’t register equipment.

4) Will refresh first when browse into “Remote Control”. Remote control work only under “Auto control” mode. Key in zone # which needs remote control to the table, and hit “Save and Control” to control.

5) Browse into “History Log”, The default of history lot is for 30 days. Hit “Browse” will show history at right side. Hit “Export browse record” will export history show at right side into Excel file.

See following:

History Log - ANC TECHNOLOGY

**Check the time range, only to browse the record in the time range. Otherwise not limited time.**

Limit time  
From 2015-12-13 15:41  
to 2016-01-13 15:41

**Check the zone number only show the specified zone, otherwise it will show all zones.**

Zone history  
Select zone: 20

Soil moisture history  
Irrigation history

Browse

Browse Failure history

Flowmeter history  
Select flowmeter: 1

Browse

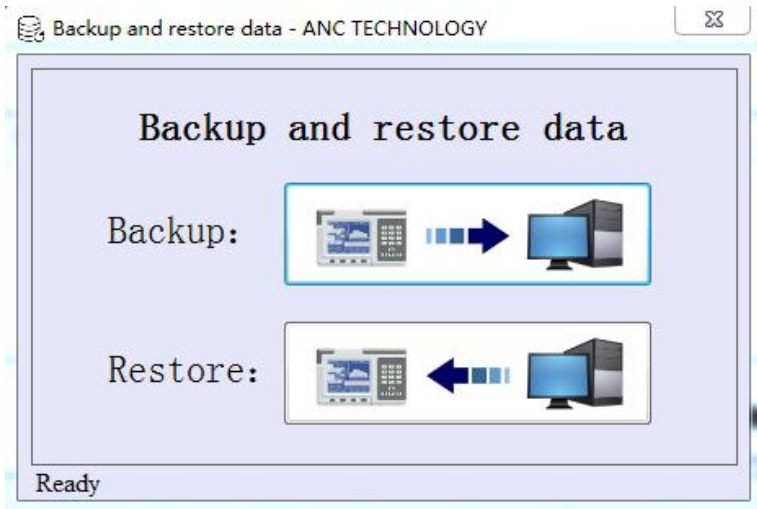
Export browse records


**Records show area**

Time	Device number	Moisture (%)
2015-11-08 14:00	1	34
2015-11-08 13:30	1	34
2015-11-08 13:00	1	Communication failed
2015-11-08 00:00	1	35
2015-11-07 23:30	1	35
2015-11-07 23:00	1	35
2015-11-07 22:30	1	35
2015-11-07 22:00	1	35
2015-11-07 21:30	1	35
2015-11-07 21:00	1	35
2015-11-07 20:30	1	35
2015-11-07 20:00	1	35
2015-11-07 19:30	1	35
2015-11-07 19:00	1	35
2015-11-07 18:30	1	36
2015-11-07 18:00	1	36
2015-11-07 17:30	1	36

- 6) For flow meter and pressure sensor, need to register first as required, and key in the control ranges for both, before hit the “Save” key to save.( Main controller without this function, please operation on PC)
- 7) Hit “Scan Now” will make the main controller start to scan immediately, update current work status from the main controller into PC right after finished scan.
- 8) Hit right top “Backup and restore data” icon, show frame as following. Backup data including: Main controller PID、all setup information and wireless communication route. The data can be restore back to another main controller (Same model with old main controller) or the main controller itself. If you restored the data to another main controller, then please stop using the old main controller, otherwise will cause mess at history log.





9) PC will update history log once connected to main controller, then update every one hour. All history log stored in the  file, can guide into Excel file anytime.

10) Operate the chart:

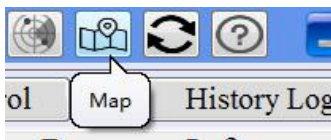
[Drag] With left mouse button to drag mouse left or right will move the chart.

[Zoom] With the mouse wheel to zoom in and out the chart of the designated area.

[Zoom in] With right mouse button to drag left to right to select and zoom in pointed zone of the chart.

[Restore] With right mouse button to drag chart from right to left will restore the chart to original location.

## 6. How to use map



This map is for showing all the zone working status straight and easy. Like zone border, pump, master valve, valves, flow meter work status. Hit map icon as shown above will jump out map as following. Has icons for pump, master valve, valve, flow meter and established zone border. Can add or minus icons according to real situation. ANC will make the map for you at charge.





## 6.1.How to use the map

1. Hit zone # that you want to see, or flow meter icon will show working status of this zone, as following:



2. Using left key of mouse to move map.
3. Using wheel of mouse to enlarge and shrank map. Maximum resolution is 5000\*5000, Enlarge until map reached whole screen. Icons will follow up.